

# FIRST HILL STREETCAR

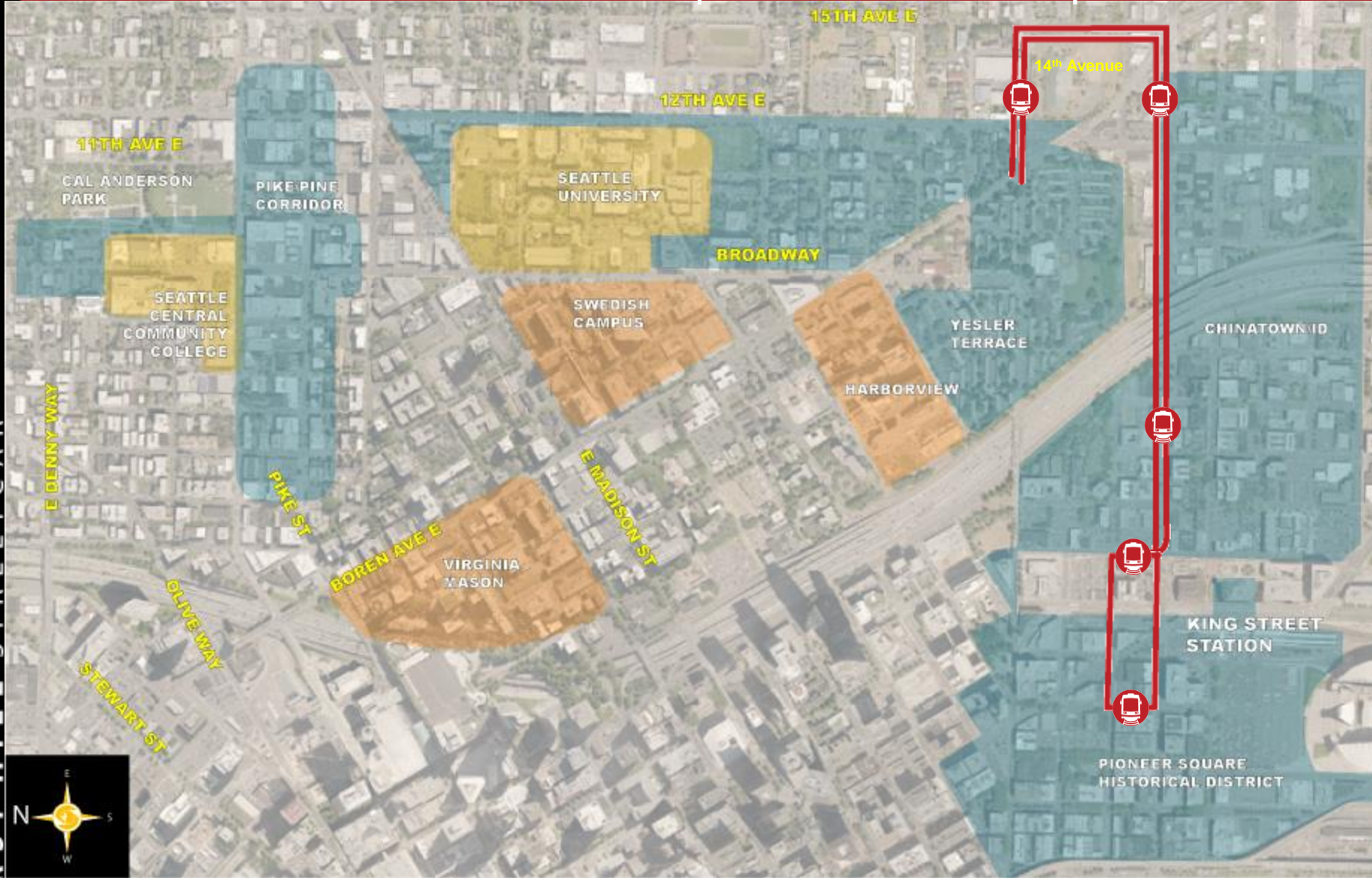


## Overview of Alignment Alternatives

January 2010

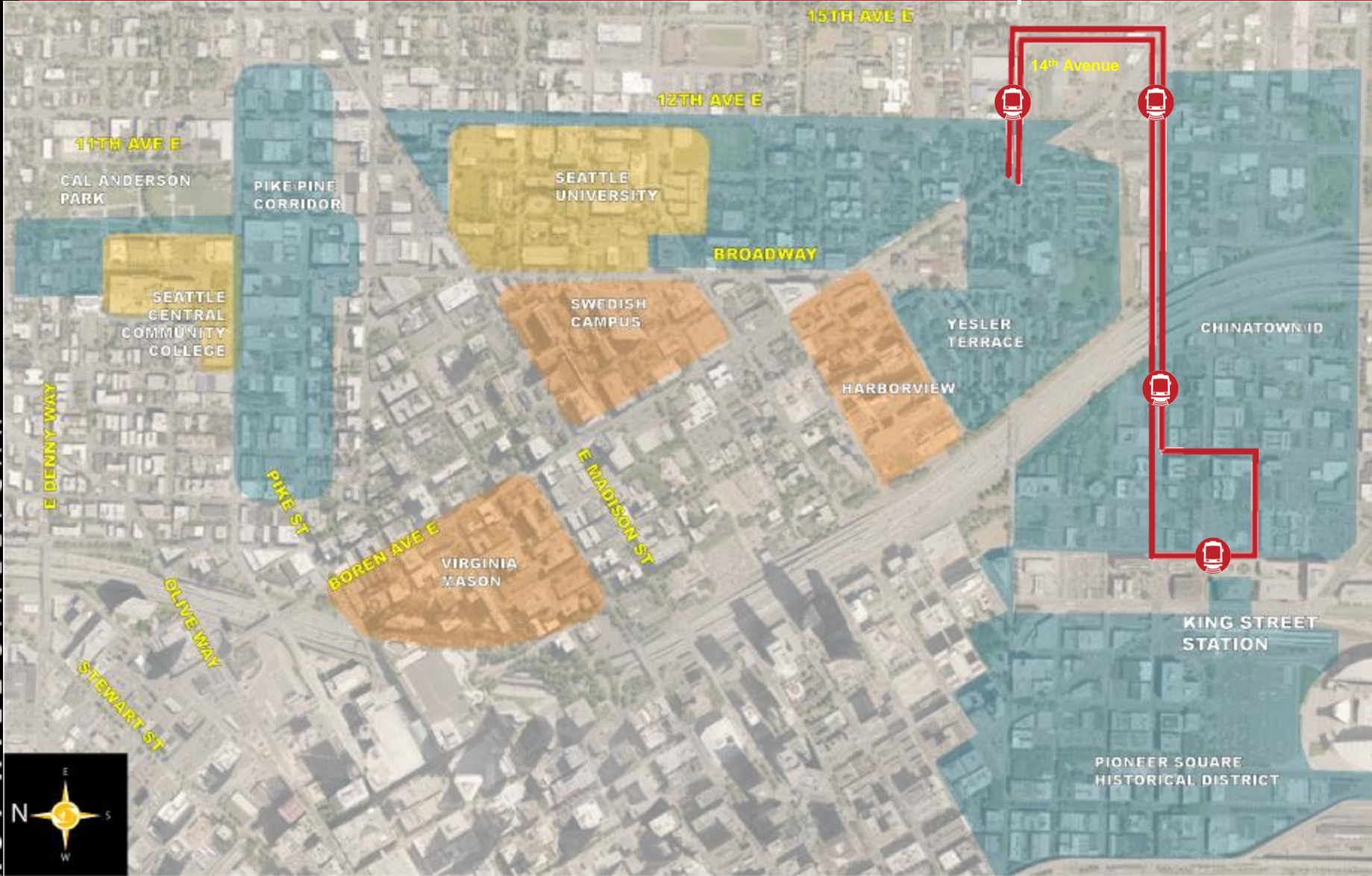


# Chinatown/International District: Southern Terminus with Pioneer Square Turnback Loop



FIRST HILL STREETCAR

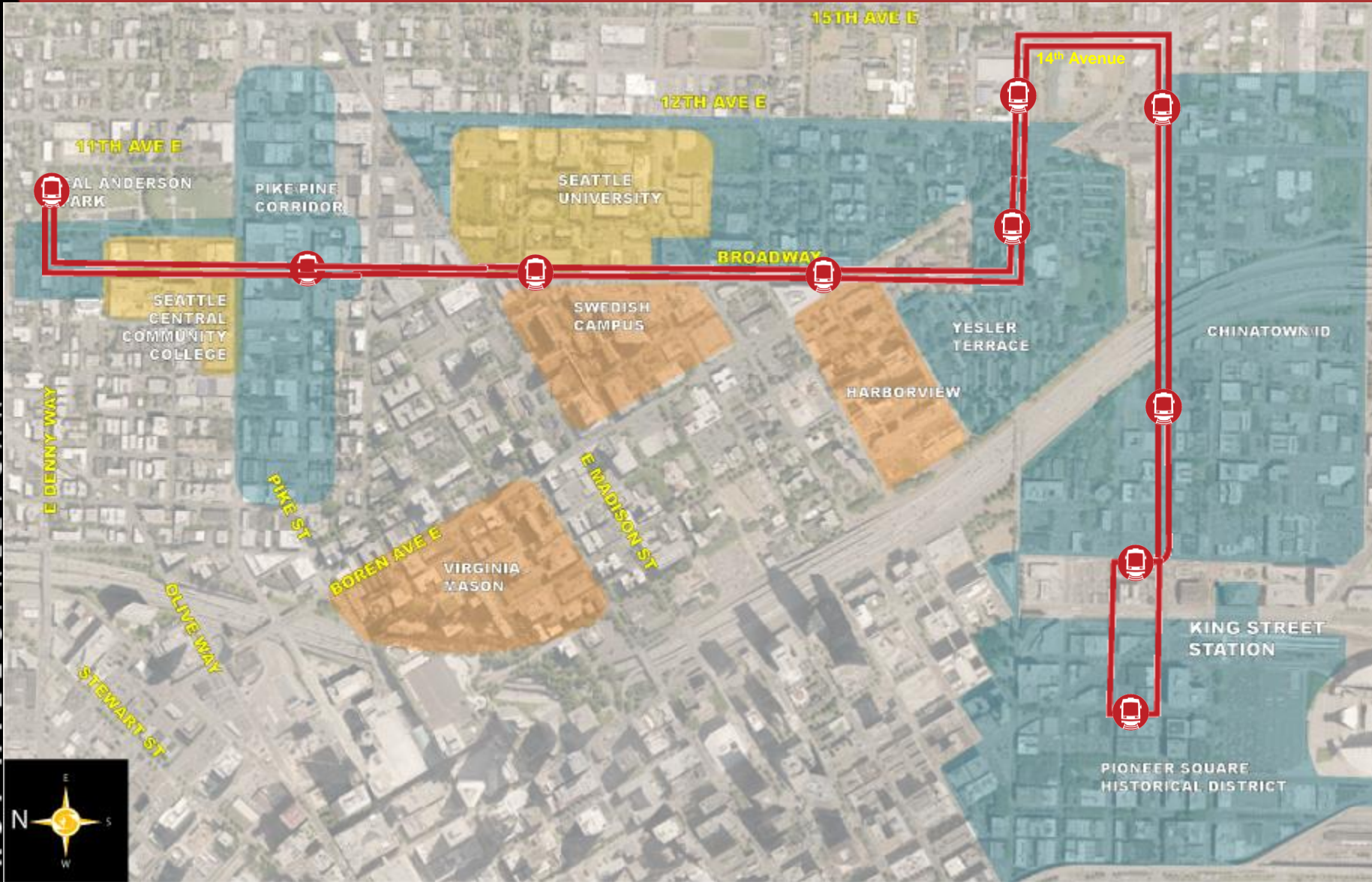
# Chinatown/International District: Southern Terminus with Weller Street Turnback Loop



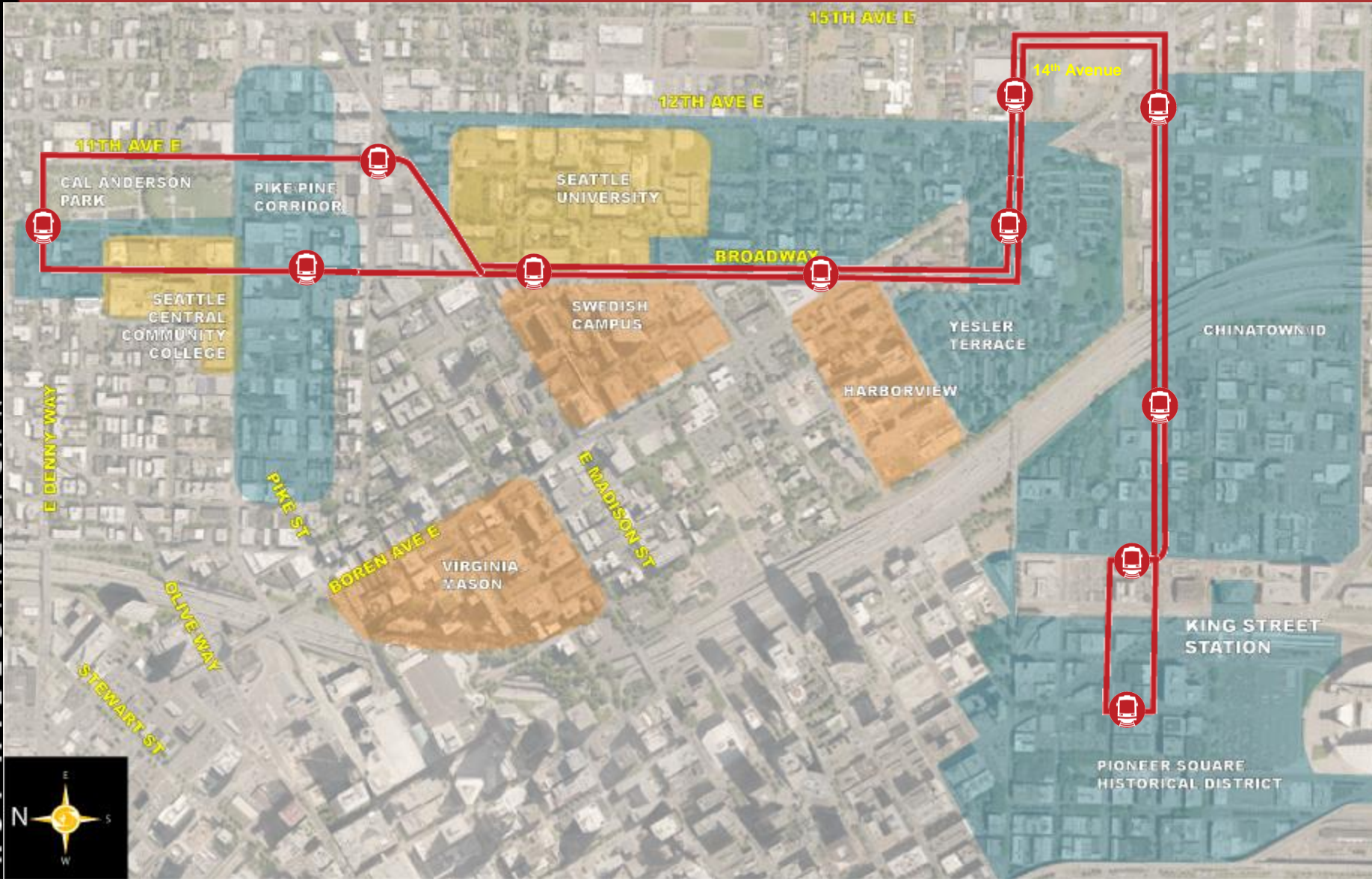
FIRST HILL STREETCAR

# Two-Way Broadway

FIRST HILL STREETCAR



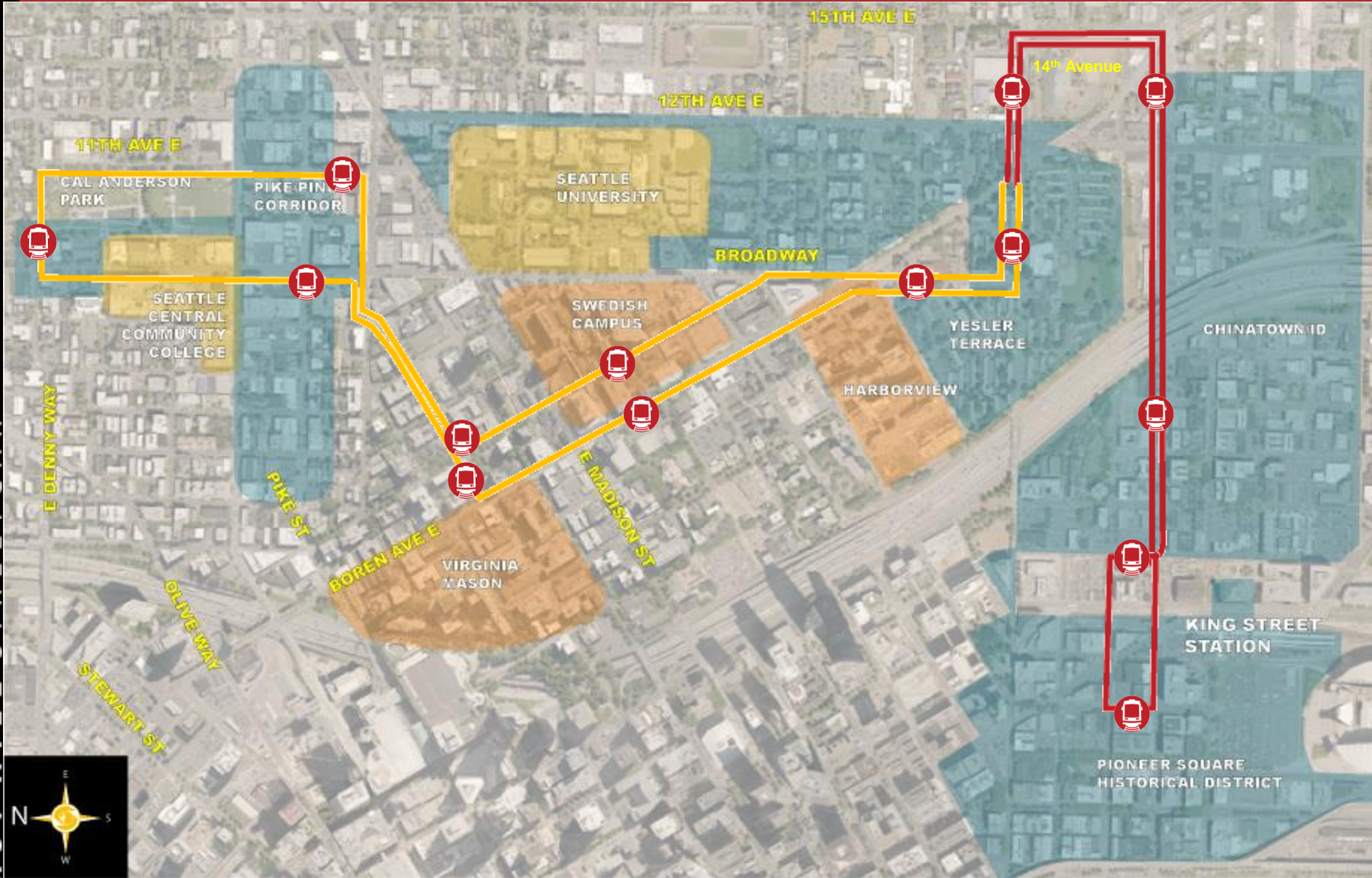
# Two-Way Broadway with Park Loop



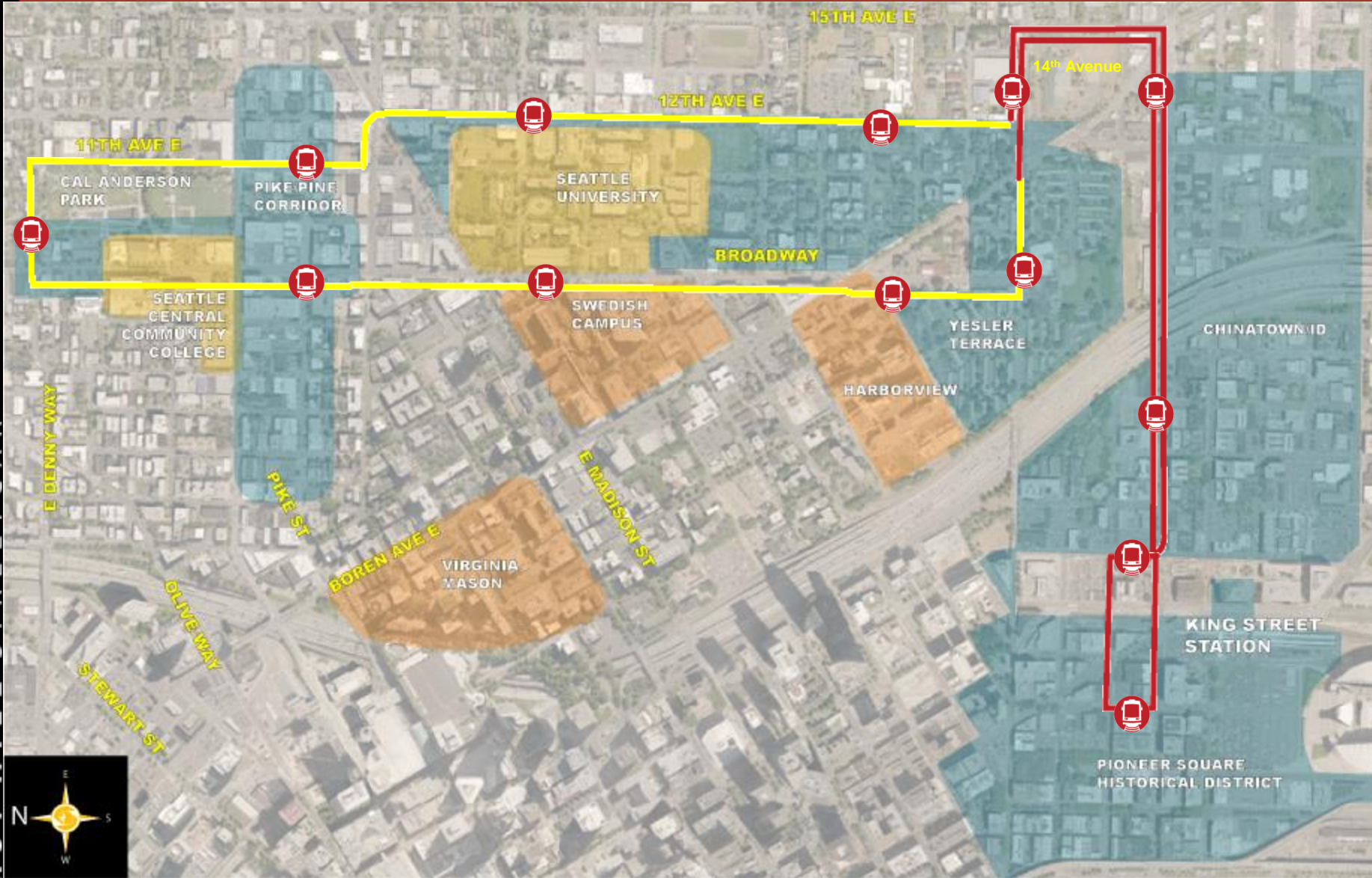
FIRST HILL STREETCAR

# Boren/Seneca

FIRST HILL STREETCAR



# Broadway/12<sup>th</sup> Avenue Couplet



# Broadway/Boylston/Seneca

FIRST HILL STREETCAR

