

# SEATTLE STREETCAR

---

## Center City Connector

Thank you for your interest in the Center City Connector. In this weekly update, you'll find info about upcoming utility construction, construction staging, and other work in the area.

The Center City Connector will connect the existing streetcar lines to move more people downtown to live, work, shop, and play!

**Did you know?** The new streetcar will arrive every **5** minutes during peak times.



## Utility locating work is here!

### UTILITY LOCATING WORK ALONG 1ST AVE S BETWEEN S KING ST AND YESLER WAY

Starting the week of October 23, and continuing for approximately 1 month, crews will be confirming utility locations for upcoming utility work. Typical work hours are 7 AM to 4 PM weekdays. This work requires roadway excavations in multiple locations along 1st Ave S between S King St and Yesler Way and on S Jackson between Occidental Ave S and 1st Ave S.

Crews plan to start on S Jackson St on both sides of 1st Ave S, then work their way from south to north along 1st Ave S as well as on S Main and S Washington streets. After this mid-block work is complete (approximately mid-November), crews will complete intersection work on weeknights. You can expect some parking and travel lane restrictions, and traffic detours. [Click here for more detail in our construction notice.](#)



## CONSTRUCTION STAGING

Starting October 23, the parking lane on the north side of S Main St between 1st Ave S and Post Alley S will be closed for construction staging. Sidewalk and alley access will be maintained.

## OTHER WORK IN THE AREA

Puget Sound Energy (PSE) and Seattle City Light (SCL) are also conducting work in the area.

To learn more about the PSE work, visit: [www.pse.com/seattlecore](http://www.pse.com/seattlecore)

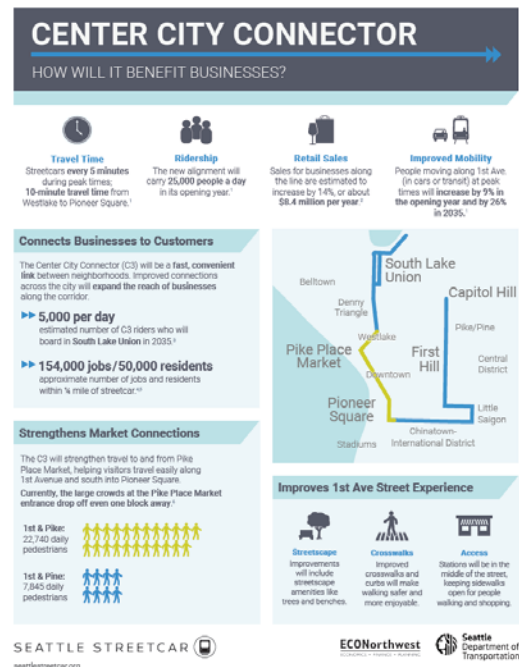
To learn more about the SCL work, visit: [www.seattle.gov/light/atwork](http://www.seattle.gov/light/atwork)

Our [construction folio](#) has more information about the project and upcoming construction impacts. We'll update this information and provide advance notice as we know more.

## How will the Center City Connector benefit businesses?

[This infographic](#), developed in partnership with EcoNW, describes how the new streetcar will expand access to businesses along the corridor. Highlights include:

- Sales for businesses along the line are estimated to increase by **14%**, or about **\$8.4 million/year**
- The new alignment will carry **25,000** people a day in its opening year
- The number of people moving along 1st Ave (in cars or transit) at peak times will increase by **9%** in the opening year and by **26%** in 2035





For more information about the project, please visit our website:

[www.seattlestreetcar.org/centercity.htm](http://www.seattlestreetcar.org/centercity.htm)

Contact us at [centercitystreetcar@seattle.gov](mailto:centercitystreetcar@seattle.gov) or call (206) 400-7578.

To forward this update to others who may be interested in the project, please [click here](#).

Thank you!

*Center City Connector Streetcar project team*



**Seattle**  
Department of  
Transportation

